

## Map and Description of the Area to be Served - Swain County

The 93 project areas, encompassing 1624 unserved locations (see below), are largely contiguous to the existing Zito Media hybrid fiber coax network in Swain County. All new locations will be served by Fiber-To-The-Home GPON, with a maximum bandwidth of 1000 Mbps downstream by 1000 Mbps upstream. Electronic mapping of these areas is included with this application as a GIS shapefile.

Area	Locations	Route Miles	Locations Per Mile
1	18	0.129	139.93
2	13	0.495	26.25
3	14	0.771	18.16
4	6	0.573	10.46
5	7	0.128	54.83
6	14	0.496	28.22
7	8	0.260	30.80
9	16	0.071	226.14
10	15	0.647	23.18
11	5	0.278	18.00
12	4	0.078	51.56
13	13	0.433	30.03
14	12	0.414	29.01
15	4	0.136	29.37
16	2	0.056	35.47
17	64	3.674	17.42
18	72	4.805	14.98
19	40	3.719	10.76
20	14	0.399	35.06
22	8	0.339	23.60
23	13	0.979	13.28
24	11	0.401	27.44
25	13	0.710	18.32
26	5	0.040	125.81
27	34	1.473	23.08
28	6	0.158	37.89
30	12	0.325	36.94
31	6	0.397	15.13
33	26	0.397	65.53
34	10	0.089	112.67
35	18	0.383	47.02

Area	Locations	Route Miles	Locations Per Mile
36	7	0.087	80.77
37	8	0.473	16.93
38	38	2.231	17.03
39	83	4.137	20.06
40	9	0.314	28.62
41	12	0.416	28.84
42	13	0.440	29.53
43	6	0.062	96.80
44	24	0.681	35.24
45	4	0.161	24.92
46	21	1.467	14.32
47	9	0.672	13.40
48	18	1.029	17.49
49	3	0.081	37.19
50	4	0.307	13.02
51	4	0.165	24.27
52	22	1.740	12.64
53	34	3.381	10.05
54	223	9.718	22.95
55	84	5.197	16.16
56	49	2.067	23.71
57	31	1.776	17.46
58	15	0.478	31.38
59	29	0.434	66.87
60	2	0.172	11.63
61	7	0.220	31.78
62	3	0.094	31.84
63	6	0.606	9.90
64	25	0.973	25.69
65	7	0.438	16.00
66	6	0.140	42.87

Area	Locations	Route Miles	Locations Per Mile
67	8	0.345	23.17
70	7	0.155	45.20
71	5	0.097	51.30
72	3	0.102	29.49
73	7	0.604	11.59
74	6	0.091	65.89
75	3	0.123	24.41
76	13	0.567	22.93
78	4	0.061	65.19
79	4	0.208	19.24
80	3	0.210	14.29
81	7	0.175	39.98
82	5	0.128	39.03
83	17	0.451	37.70
84	5	0.255	19.63
86	3	0.054	56.02
87	19	0.745	25.51
88	7	0.173	40.48
89	16	0.559	28.62
90	19	0.393	48.35
91	8	0.546	14.67
92	4	0.145	27.67
93	5	0.316	15.84
94	53	4.124	12.85
95	12	0.848	14.15
96	2	0.097	20.66
97	3	0.252	11.89
98	9	0.115	78.49
99	5	0.166	30.19
100	17	0.215	79.19
104	36	3.019	11.92

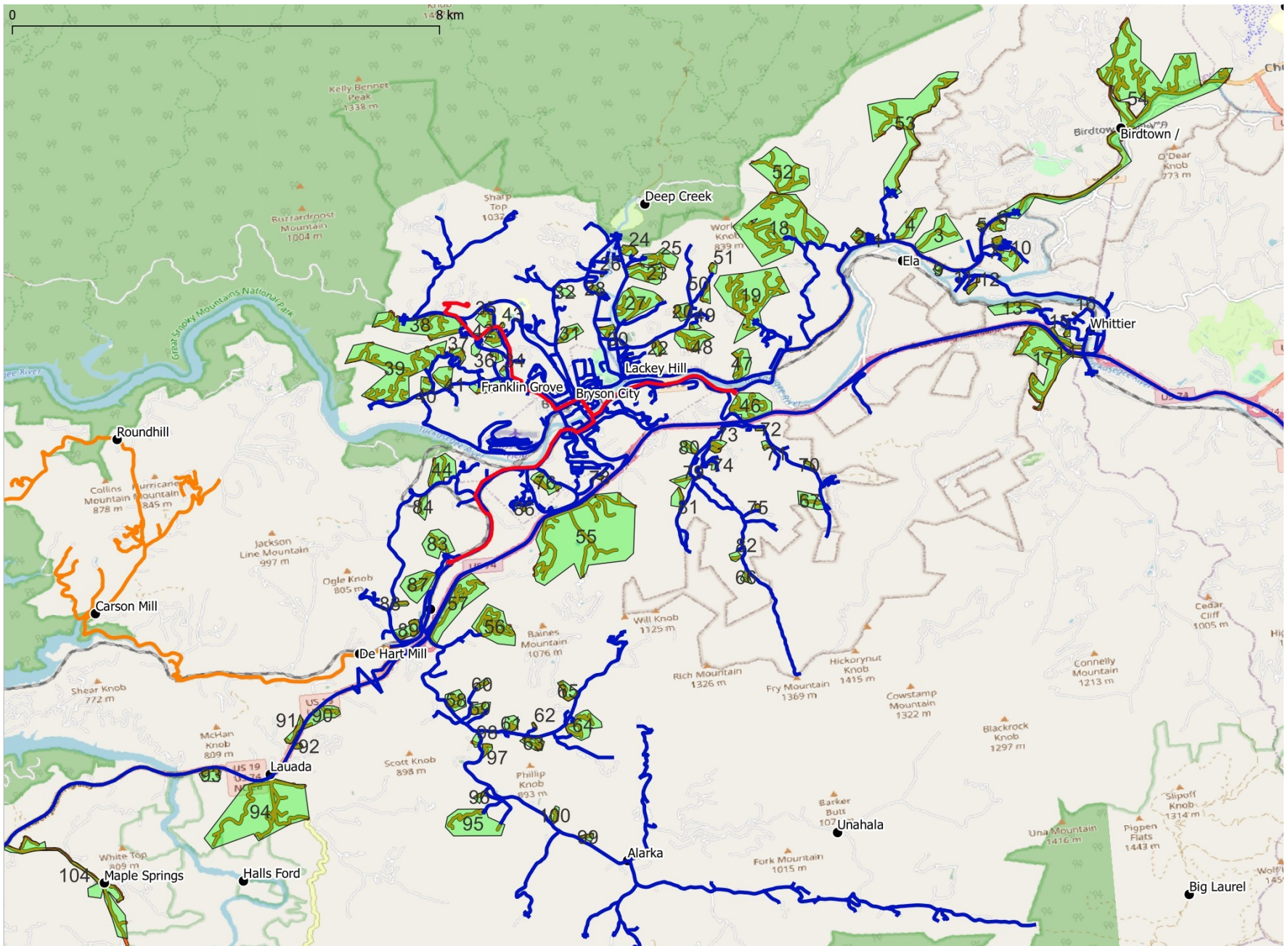


## Commercial and Other Non-Residential locations - Swain County

Non-residential locations identified using NC OneMap swain\_parcel shapefile

See maps on following pages for locations.

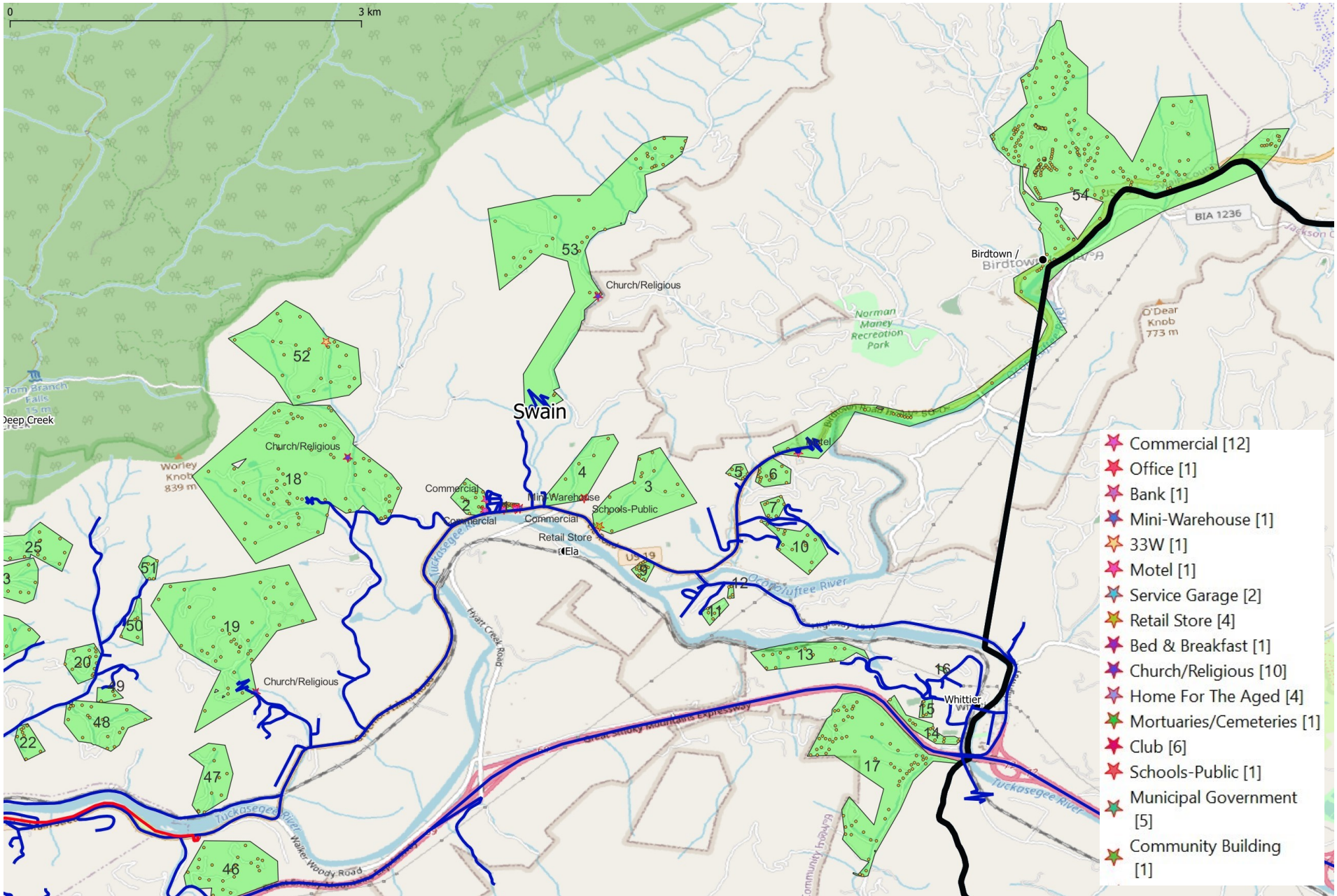
<b>Category</b>	<b>Count</b>
Commercial various	24
Church/Religious	10
Home for the Aged	4
Club	6
Schools-public	1
Municipal Government	5
Community Building	1
<b>Total =</b>	<b>51</b>



## Swain County Overall Project Map

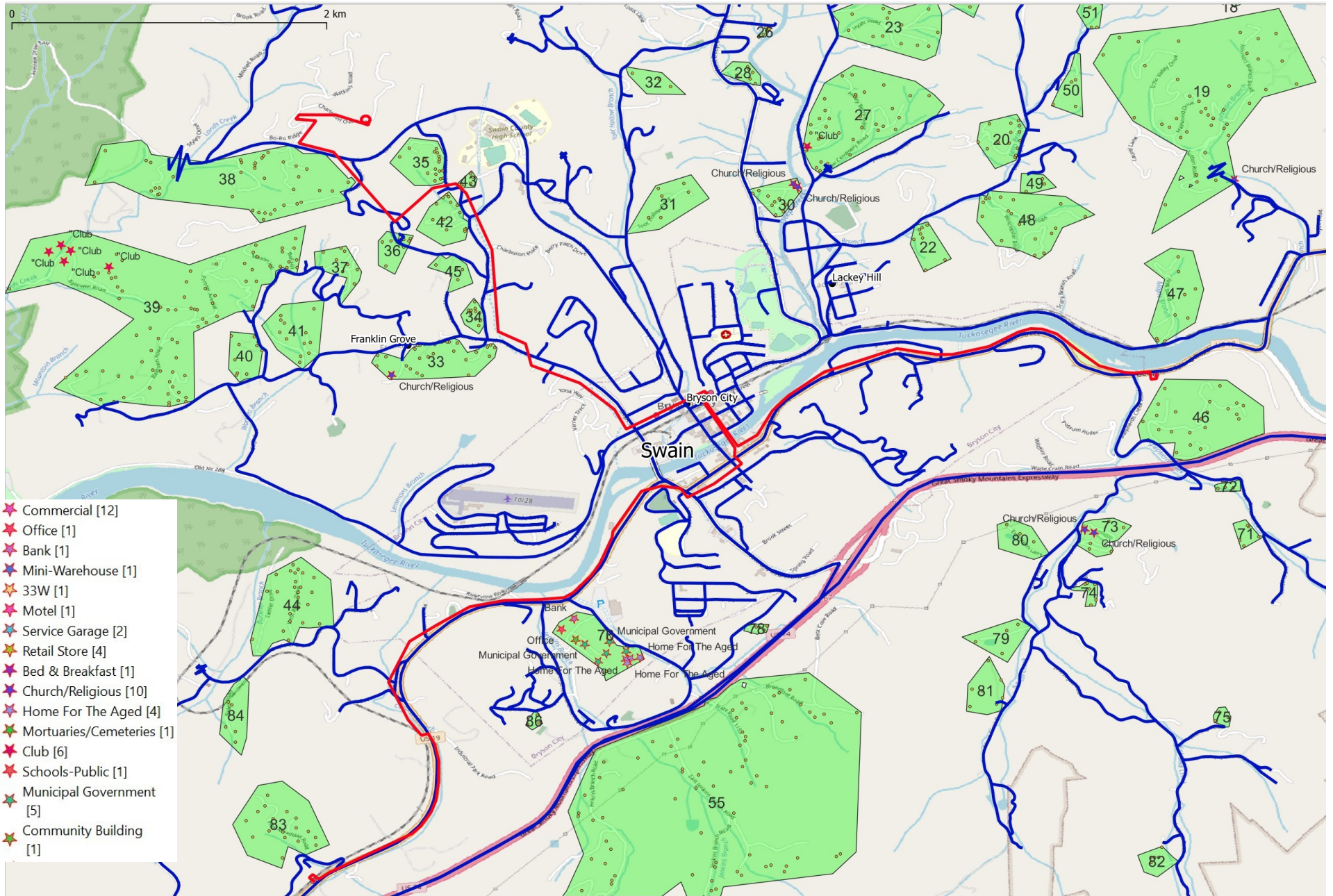
The blue line represents the current Zito coaxial service line, red represents fiber





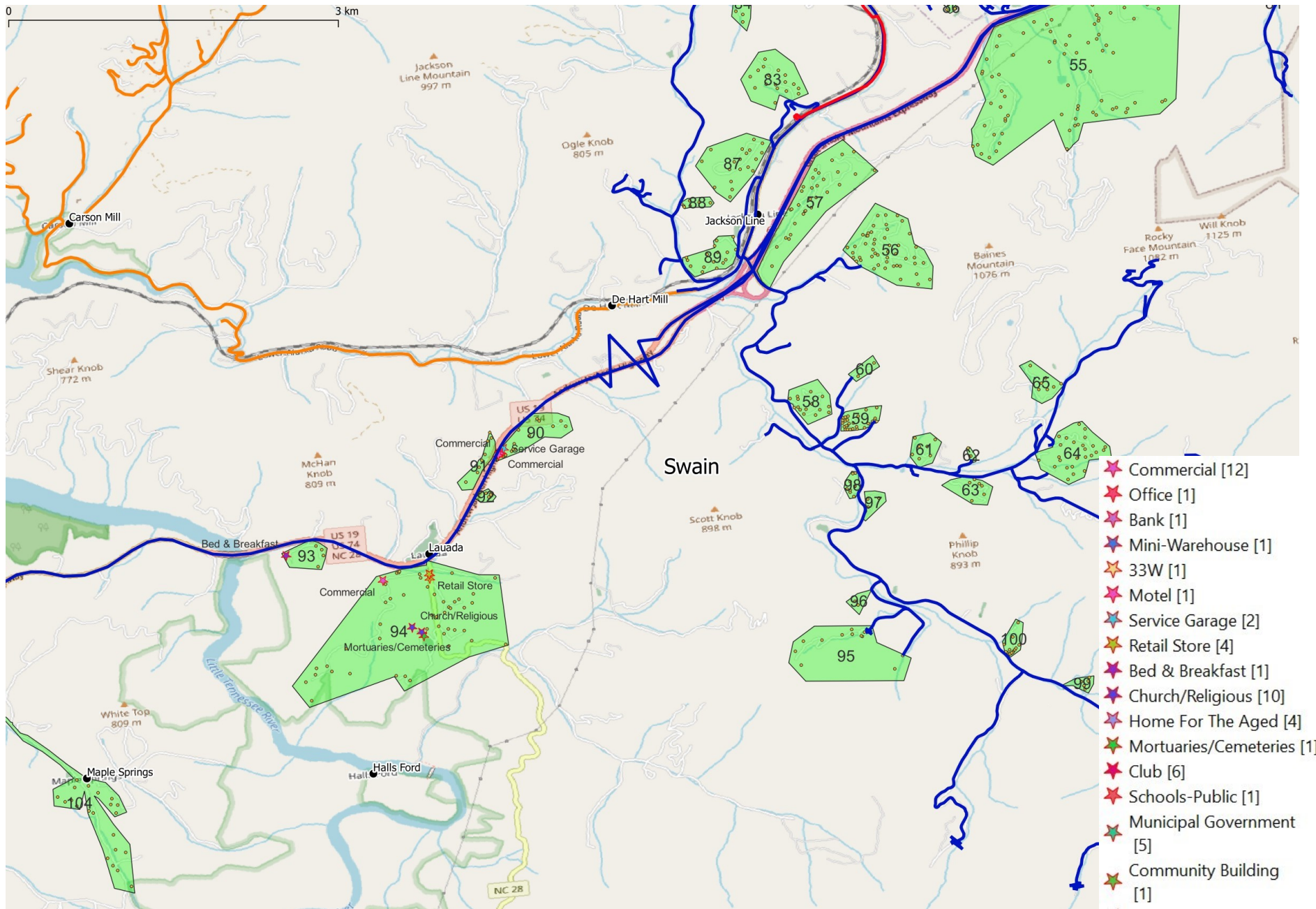
**Swain County North**  
**Project Map Including NC Location Data and**  
**Commercial Locations Data in Project Areas**





**Swain County Bryson City Area  
Project Map Including NC Location Data and  
Commercial Locations Data in Project Areas**





**Swain County South  
Project Map Including NC Location Data and  
Commercial Locations Data in Project Areas**

